

## FEATURES

- Rectangular modular design
- Available 50W, 100W
- 100,000 hour life L70
- 5 year warranty
- IP65 rating for wet, dusty environments
- High brightness and low glare
- DLC; Rebate Eligible
- Dependable garage light
- Energy savings of 60-75%
- Easy installation and reduced maintenance costs

## OVERVIEW

The OEO Garage LED is IP65 for wet and dirty indoor/ outdoor environments. High brightness, big energy savings, and low maintenance over the long LED life ensure consistent performance and fast ROI payback.

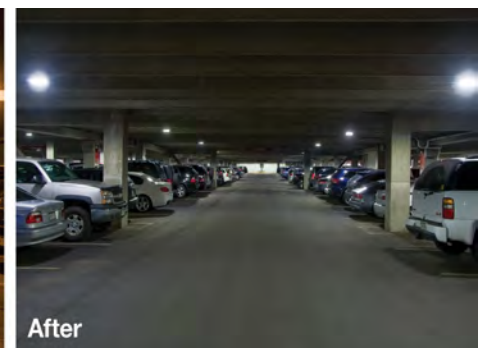
## APPLICATIONS

- Parking Garages
- Indoor Car Decks
- Corridors and Walkways
- Grocery Stores
- Low Bay Freezers

## CERTIFICATIONS



Before



After

**PRODUCT SPECIFICATIONS**

Model	Replaces	Lumen Output	Dimensions	Weight
Garage 50W	150w/175w HID	5,000 lumen	13.2" x 6.3" x 3.7"	5.5 lbs
Garage 100W	250w HID	10,000 lumen	25.6" x 6.3" x 3.7"	10 lbs

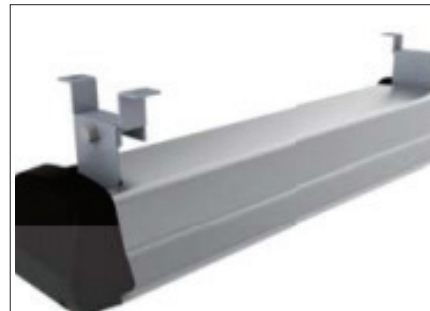
- **COLOR TEMP:** 5,000K (3,000-4,000K optional)
- **CRI:** 80+
- **POWERED BY:** 100-277V (347/480VAC optional)
- **HUMIDITY:** 15-90% Relative Humidity
- **OPERATING TEMP:** -40 °F to 113 °F
- **BEAM ANGLE:** 90° (70° x 135° optional)
- **MOUNTING OPTIONS:** Pendant or Surface Mount (3.2 ft cord; other lengths available)
- **DIMMING:** Optional

**MOUNTING OPTIONS**

\*Image comparison not to scale, for mount display only



PENDANT MOUNT



SURFACE MOUNT

**ORDERING**

ex. OEO GAR-100W-T-02-01-01-03-02

MODEL	WATTAGE	OPTION	INPUT VOLTAGE	COLOR TEMP	OPTICS	DIMMABILITY	MOUNTING
OEO GAR	50W 100W	T = Dimmable HV = 480v HVT = Dimmable 480v	01 = 100-277V 02 = 347-480V	01 = 5,000K 02 = 3,000K 03 = 4,000K	01 = 90° 02 = 70° x 135°	01 = Non-dimmable 02 = Microwave sensor dimmer 03 = Infrared sensor and dimmer 04 = Photocell	01 = Pendant 02 = Surface

\*Take advantage of our 30 day trial period for a full product refund