

## BALLAST BYPASS LAMP

# TT5 LED Twin Tube

These TT5 Twin Tube Lamps are an energy saving LED replacement for fluorescent and CFL lamps. Experience exceptional energy efficiency with these long-lasting LED TT5 lamps, with an impressive 50,000-hour lifespan and instant illumination. Designed with an optimized glass structure, they offer uniform light distribution for maximum brightness. These lamps are engineered to operate on 120-277V direct line voltage. Illuminate your space with confidence and save more than 50% in energy cost with this LED TT5 replacement lamp.



### FEATURES

- PL-L lamp - plug in lamp in long version
- Ballast bypass LED replacement lamp
- Wire to direct line voltage, 120-277v
- Double ended input reduces installation costs, shunted or non-shunted sockets
- Long Life: 50,000 hours L70
- Glass construction for optimum optical efficiency
- Reduces energy by up to 40%
- Full light down to -4°F
- RoHS Compliant – Mercury Free
- UL Classified 1598C for US and Canada
- No UV emissions
- Ideal for frequent on/off Switching

### APPLICATIONS

- Classroom
- Office
- Hospitality
- Retail Spaces
- General Lighting

### CERTIFICATIONS



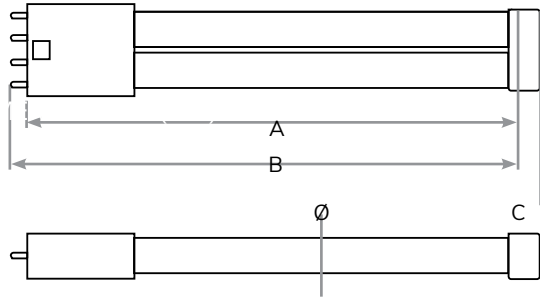
**RoHS**

### SPECIFICATIONS

- **LAMP TYPE:** Long Twin Tube (TT5)
- **POWERED BY:** 120-277v
- **CCT:** 3500K, 4000K
- **WATTAGE:** 17W, 23W
- **LUMENS:** 2,100 to 2,800 LM
- **CRI:** 82
- **RATED LIFE:** L70 @ 50,000 hours
- **OPERATING TEMP:** -4°F to 113°F
- **BEAM ANGLE:** 140°
- **BASE:** 2G11
- **WARRANTY:** 5 years

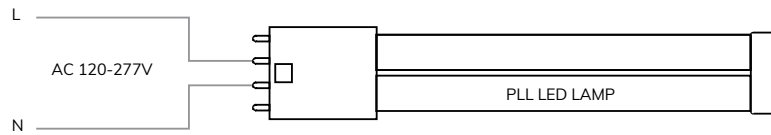
# BALLAST BYPASS LAMP TT5 LED Twin Tube

## DIMENSIONS



Dimensions	Min	Max
A	556	564
B	563	571
C	39	39.4
	16.5	17.5
Base	2G11	

## WIRING DIAGRAM



## PRODUCT DETAILS

MODEL	ORDERING CODE	LENGTH	WATTAGE	CCT	LUMENS	DLC	EFFICACY	UPC CODE
TT5LACD17/835B	TT5LACD17/835B24C	22"	17	3500K	2,100 LM	Y	124	768386713234
TT5LACD17/840B	TT5LACD17/840B24C	22"	17	4000K	2,200 LM	Y	129	768386713241
TT5LACD23/835B	TT5LACD23/835B24C	22"	23	3500K	2,600 LM	A	113	768386713258
TT5LACD23/840B	TT5LACD23/840B24C	22"	23	4000K	2,800 LM	A	122	768386713265

## NOTES:

- Suitable for use in dry and damp environments
- Must follow installation guidelines provided with the lamp shipment

