



BALLAST COMPATIBLE TLED LAMP

T5 High Output LED Tube - 4 Foot

OEO offers multiple varieties of LEDs to replace your fluorescent tubes. Our LED tubes are an affordable, reliable, and smart alternative to inefficient T5, T8, and T12 fluorescents. These LED tubes are a great retrofit solution and offer a quick and easy way to upgrade your fixtures to energy savings LED.

FEATURES

- Ballast compatible, direct replacement LED tube (Type A) for high output fluorescent T5s
- Simple plug-n-play solution, no fixture rewiring required
- Save up to 53% energy compared to high output fluorescent T5 tubes.
- Long life: 50,000 hours, L70 rating
- LEDs last 2.5x longer than fluorescents
- Suitable for dry and damp environments
- Glass construction with shatter proof coating
- DLC 5.1, rebate eligible

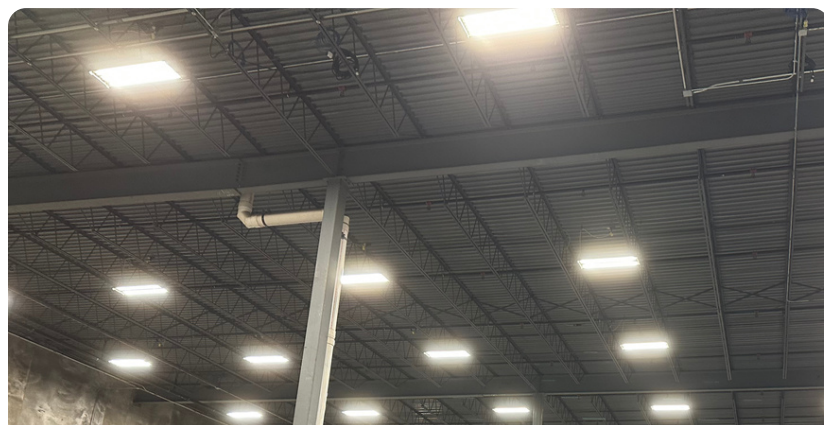
APPLICATIONS

- Warehouse
- Manufacturing
- Office
- Schools & Universities
- Retail
- Hospital
- Hospitality
- Parking Lot

CERTIFICATIONS



RoHS



SPECIFICATIONS

- **TYPE:** Ballast compatible, Type A
- **POWERED BY:** Existing electronic ballast,
- **BASE:** G5 bi-pin (5mm base)
- **EFFICACY:** 136 lumens per watt
- **CRI:** 82
- **OPERATING TEMP:** -4° to 113°F
- **BEAM ANGLE:** 240°
- **WARRANTY:** 5 years
- **MANUFACTURER:** Universal Douglas

NOTE:

These Type A tubes only function with an operable F54T5HO electronic ballast. **Do not use in fixtures where the existing ballast has been bypassed.** Failure to adhere to instructions voids warranty. Please check ballast compatibility list prior to ordering.

BALLAST COMPATIBLE TLED LAMP

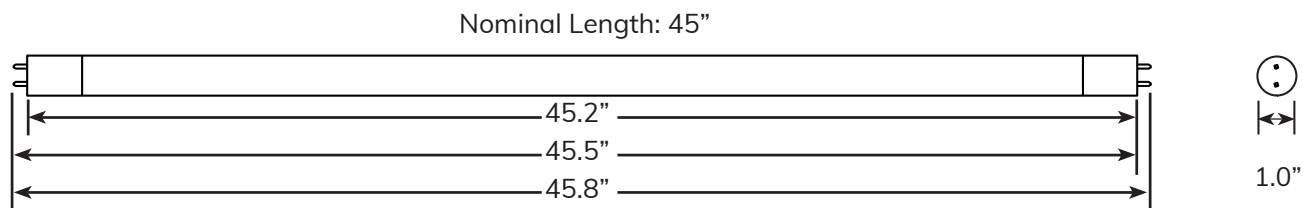
T5 High Output LED Tube – 4 Foot

PRODUCT DETAILS

Model	Nominal Length	Watts	Lumens	LPW	CCT
T5LDR4F25/850A	45"	25W	3,400 LM	136	5000K



DIMENSIONS



OPERATING NOTES

- Lamp used as a direct replacement for fluorescent 4 foot **T5HO lamps with electronic ballasts only**
- Consult with ballast compatibility list. Compatibility subject to change as additional ballasts are tested.
- Suitable for use in dry and damp environments
- Not for use with magnetic ballasts
- Not for use in enclosed fixtures

