



HYBRID LAMP: BALLAST COMPATIBLE OR BALLAST BYPASS

OEO EZ LED - VERSA BPT Series

The OEO EZ LED Versa Hybrid BPT is designed to replace your HID lamps in existing bollards and post tops. Save 65-80% in energy costs. Simply plug in; no rewiring required for the fastest upgrade. Or you can bypass the ballast, eliminating ballast maintenance forever. This is a great retrofit for bollard and post top fixtures.

FEATURES

- Quickly upgrade your bulbs to LED - simply swap bulbs - no rewiring required
- Two modes of operation; ballast compatible or ballast bypass
- Maintains bright, more consistent light output; significantly better than HID bulbs
- 50,000 hours rated LED life
- 5 year warranty
- Easy installation - reduced material and labor costs
- Fast ROI payback
- Instant on/re-strike
- No mercury or hazardous materials

APPLICATIONS

- Outdoor bollards
- Post top fixtures
- Jelly jar fixtures
- Shoebox fixtures
- Parking lot
- Pathway lighting
- Accent lighting

INSTALLATION

- Turn off power when installing lamp
- Do not install on line voltage above 277v
- Installing surge/lightning protection is recommended

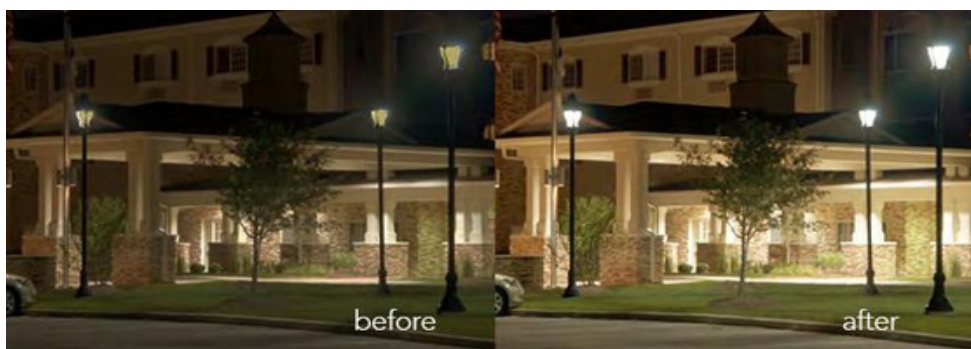
CERTIFICATIONS



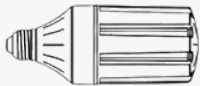
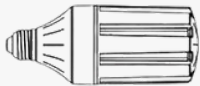
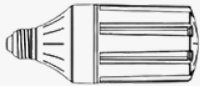
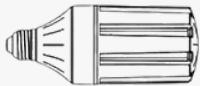
SPECIFICATIONS

- **TYPE:** Hybrid LED Lamp
- **ENERGY SAVINGS:** 65-80%
- **POWERED BY:** 110-277v or HID Ballast
- **MOUNTING:** Vertical or Horizontal
- **BEAM ANGLE:** 360°
- **FIXTURE TYPE:** Rated for enclosed fixtures
- **OPERATING TEMP:** -40°F to 122°F
- **CRI:** 85
- **DIMMABLE:** No
- **ENVIRONMENT:** UL classified for damp environment
- **WARRANTY:** 5 years

HYBRID LAMP: BALLAST COMPATIBLE OR BALLAST BYPASS OEO EZ LED - VERSA BPT Series



PRODUCT SPECIFICATIONS

MODEL	REPLACES	WATTAGE	LUMENS	CCT	BASE	DIMENSIONS
 EZ LED VERSA BPT-14-4K	50W MH/HPS	14W	2,065 LM	4,000K	E26	5.4" x 2.6"
 EZ LED VERSA BPT-18-4K	70W MH/HPS	18W	2,985 LM	4,000K	E26	6.6" x 2.6"
 EZ LED VERSA BPT-24-4K	100W MH/HPS	24W	3,400 LM	4,000K	E26	6.9"x 2.95"
 EZ LED VERSA BPT-24-5K-E39	100W MH/HPS	24W	3,400 LM	5,000K	E39	6.9"x 2.95"

YOU GET TWO OPERATING OPTIONS WITH ONE LED

BALLAST COMPATIBLE MODE

- Plug-N-Play! Simple HID Direct Replacement
- Requires no re-wiring, no electrician
- Use in MH/HPS Ballasts

BALLAST BYPASS MODE

- Line voltage must be between 110V-277V
- Requires simple ballast bypass
- Eliminate ballast maintenance

